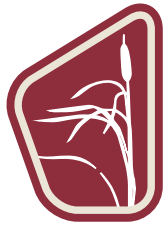


FOR LEASE



CBRE



AnthonyHenday

B u s i n e s s P a r k

11 RICHARDSON DRIVE, ST. ALBERT
118,250 TO 253,973 SQ. FT.

NEW MULTI-TENANT CLASS "A" INDUSTRIAL DUAL LOAD WAREHOUSE



ANTHONY HENDAY BUSINESS PARK

11 Richardson Drive | St. Albert, AB



ANTHONY HENDAY BUSINESS PARK

Located in the City of St. Albert, Anthony Henday Business Park has set the stage for the newest, most prestigious and functional business park serving the West Edmonton Metropolitan Region.

Situated at the intersection of Ray Gibbon Drive and LeClair Way, Anthony Henday Business Park is a master planned business park providing exceptional access to Anthony Henday Drive, Yellowhead Freeway, 137th Avenue, 170th Street, and 184th Street.

SETTING

- Extensive landscaping and green space throughout the business park.
- Storm ponds with walking trails provide increased employee wellness.
- Class "A" development with modern architecture.
- Anthony Henday Business Park is located within a 5 kilometer radius of numerous shops, restaurants and other services.
- Build-to-suit options available.

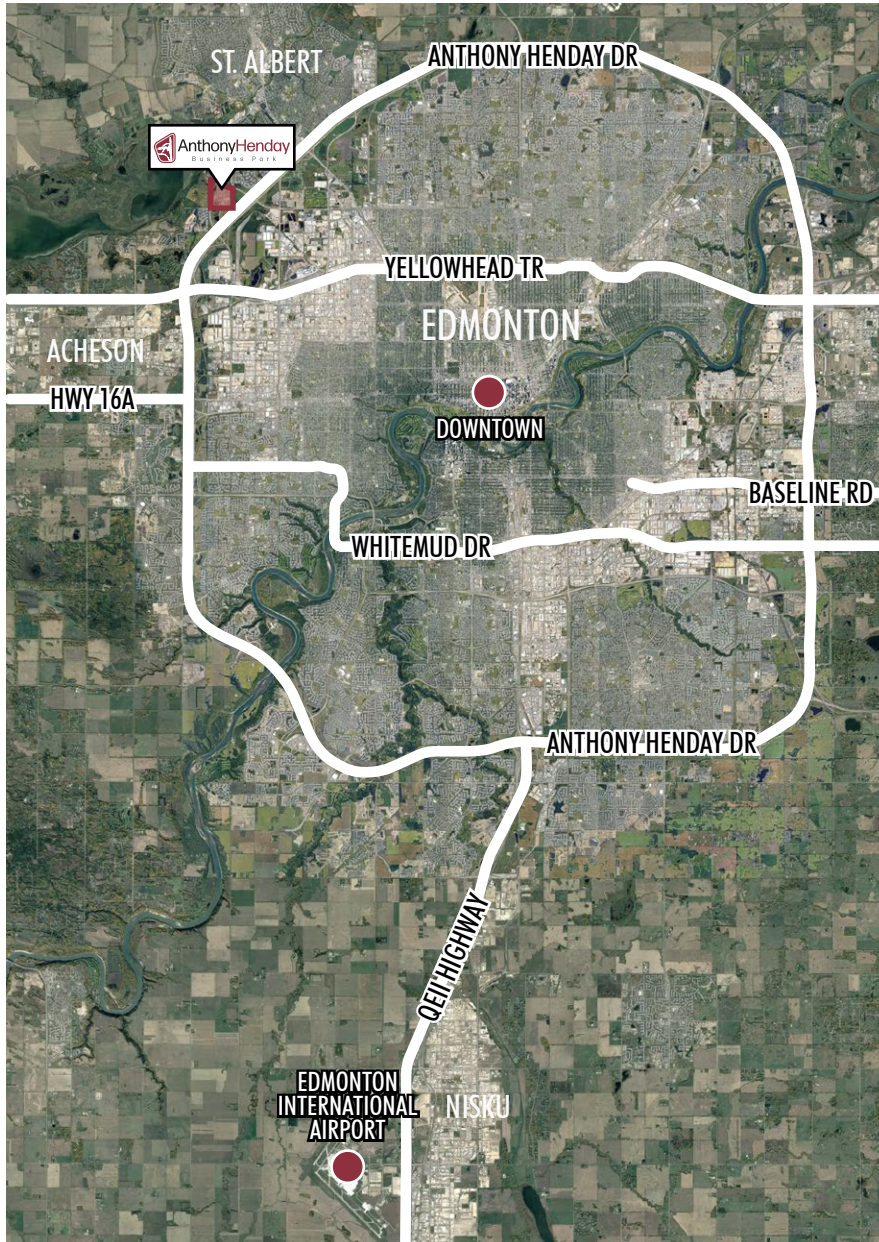
COMING SOON: BUILDING 3

- Building 3 will add an additional 257,584 sq. ft. of distribution warehouse space to Anthony Henday Business Park.

LEED CORE + SHELL

- Building 2B will achieve LEED Certification under the Building Design and Construction Category (BD+C).

FOR LEASE



DRIVE TIMES

2 MIN

To Anthony Henday Drive

9 MIN

To Yellowhead Trail (Hwy 16)

12 MIN

To Whitemud Drive

25 MIN

To Downtown Edmonton

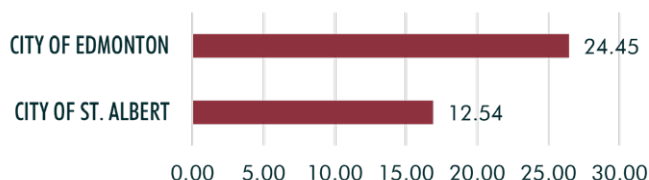
35 MIN

To Edmonton International Airport

PROPERTY TAX ADVANTAGE

- 49% lower property taxes compared to the City of Edmonton. This translates into lower operating costs for tenants of Anthony Henday Business Park.

2024 NON-RESIDENTIAL MILL RATE



EASE OF ACCESS TO SITE

- Excellent access to site from Anthony Henday Drive, 184th Street/Ray Gibbon Drive, 137th Avenue/LeClair way.
- The site is 2.5km from Anthony Henday Drive, and borders Ray Gibbon Drive.
- 3 bus stops along Richardson Drive. Service provided by St. Albert Transit.
- Ray Gibbon Drive Twinning Project: Phase 4 anticipated completion 2029.

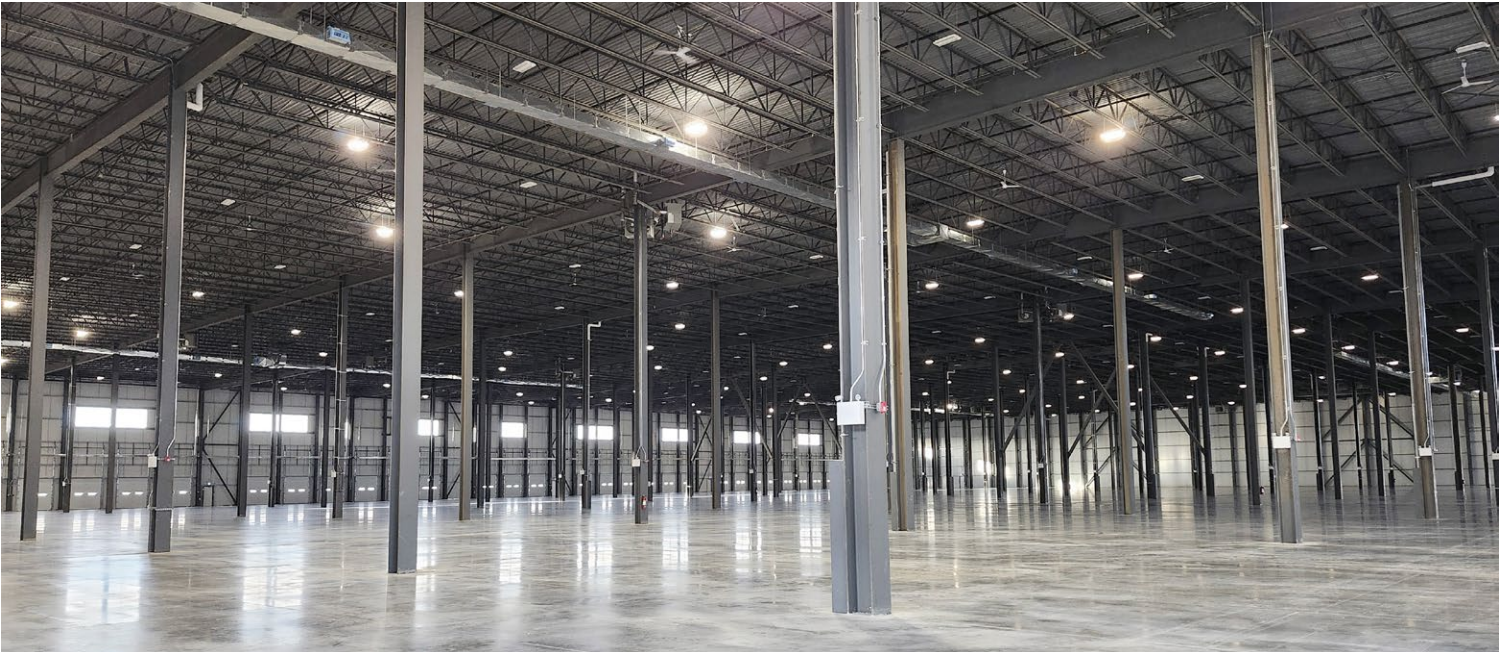
BUILDING 2B

SPECIFICATIONS	
Zoning	CIS - Commercial & Industrial Service
Site Size	12.86 Acres
Available Area	118,250 - 253,973 SF
Construction	IMP Construction & TPO Roof System
Ceiling Height	40' Clear
Column Grid	55' x 35' / 55' x 40' / 55' x 60' (60' Staging Bay)
Bay Depth	430'
Sprinklers	ESFR Sprinklers
Floor Thickness	10" Reinforced Slab
Trailer Parking	80 Stalls

Truck Court	130'
Electrical Service	2,000A, 347/600V 3-Phase Main Power Service
Heating	Forced Air & Radiant Tube in Warehouse
Loading	(59) 9' x 10' Dock (4) 14' x 16' Grade Opportunity for Additional Dock Doors
Load Levellers	40,000 lbs
Lighting	LED
2025 Op Costs	\$4.92 per SF / Annum (estimated)
Lease Rate	Market
Available	Immediately

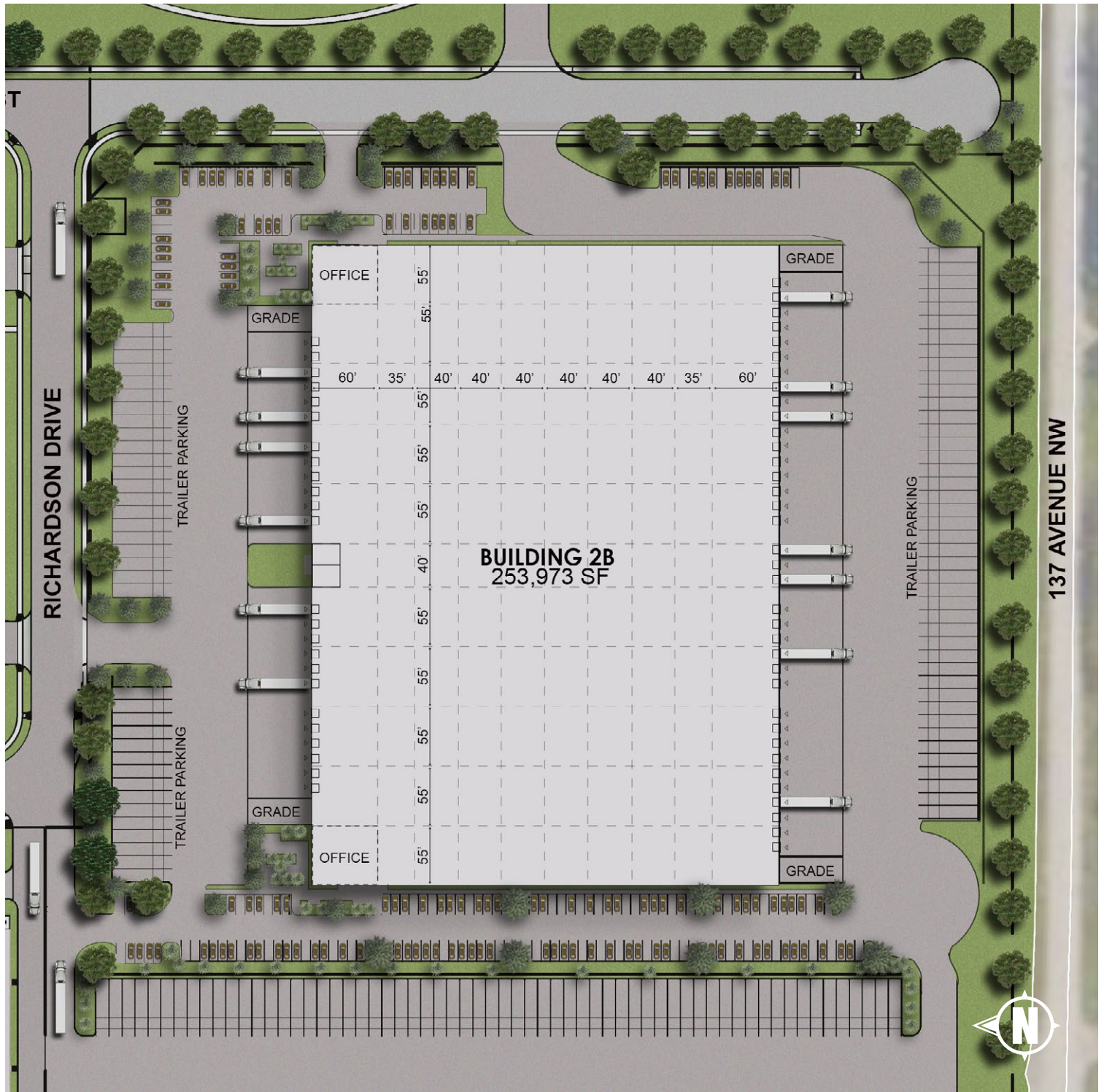
BUILDING FEATURES

This state-of-the-art 253,973 sq. ft. warehouse building features dual load capability and impressive 40' clear ceiling height allowing for increased vertical storage requirements. Building 2B is ready for immediate tenant fixturing.



FOR LEASE

SITE PLAN





Anthony Henday

Business Park

CONTACT US

THE CBRE EDMONTON INDUSTRIAL TEAM

KEVIN HUGHES

Senior Vice President
+1 780 917 4634
kevin.hughes@cbre.com

***Lead Broker**

GREGG MAIMANN

Senior Vice President
+1 780 917 4632
gregg.maimann@cbre.com

TREVOR SCHMIDT

Vice President
+1 780 917 4641
trevor.schmidt@cbre.com

JORDAN ADAMS

Vice President
+1 780 917 4645
jordan.adams@cbre.com

BRAYLON KLEMCHUK

Vice President
+1 780 229 4687
braylon.klemchuk@cbre.com

***Lead Broker**

JAY OLMSTEAD

Sales Representative
+1 780 554 1191
jay.olmstead@cbre.com

JOHN ALLAN MCKAY

Associate
+1 780 915 5020
johnallan.mckay@cbre.com

LUCAS NEUMEYER

Associate
+1 780 850 2267
lucas.neumeyer@cbre.com

*(Sub) Tenant / Purchaser is responsible to confirm the electrical service to the premises / building and ensure it is sufficient for their intended use.

This disclaimer shall apply to CBRE Limited, Real Estate Brokerage, and to all other divisions of the Corporation; to include all employees and independent contractors ("CBRE"). The information set out herein, including, without limitation, any projections, images, opinions, assumptions and estimates obtained from third parties (the "Information") has not been verified by CBRE, and CBRE does not represent, warrant or guarantee the accuracy, correctness and completeness of the Information. CBRE does not accept or assume any responsibility or liability, direct or consequential, for the Information or the recipient's reliance upon the Information. The recipient of the Information should take such steps as the recipient may deem necessary to verify the Information prior to placing any reliance upon the Information. The Information may change and any property described in the Information may be withdrawn from the market at any time without notice or obligation to the recipient from CBRE. CBRE and the CBRE logo are the service marks of CBRE Limited and/or its affiliated or related companies in other countries. All other marks displayed on this document are the property of their respective owners. All Rights Reserved.

